



# TAMLITE LIGHTING

660 NW Peacock Blvd. Port St. Lucie, FL 34986  
tel: (772) 878-4944 or on the web at [www.tamliteusa.com](http://www.tamliteusa.com)

## SPECIFICATION & FEATURES

Catalog Number
Notes
Job/Title

# CWSU

## Contour UP/Down Light

**HOUSING:**

The Contour UP/Down Light (CWSU) Series has a die-cast aluminum housing, bronze powdercoat finish.

**REFLECTOR:**

Formed aluminum reflector

**LENS:**

Flat tempered glass lens

**SOCKET:**

HID: Porcelain 4KV pulse rated medium base socket with nickel-plated screw shell.

PL: Plug-in type, 4 Pin, GX24Q-4

**MOUNTING:**

Mount over a 4" recessed outlet box. Includes Easy-Hang "Two Hands Free" wall mounting bracket.

**SOURCE / WATTAGE:**

High Pressure Sodium: 35W to 150W

Metal Halide: 50W to 150W

Compact Fluorescent: 52W to 84W (2x26, 2x32, 2x42)

120-277V electronic ballast

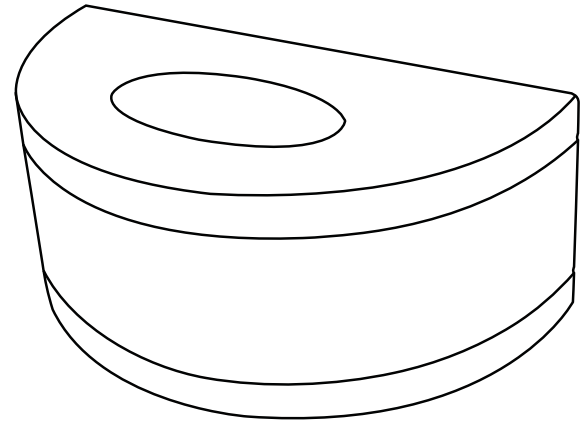
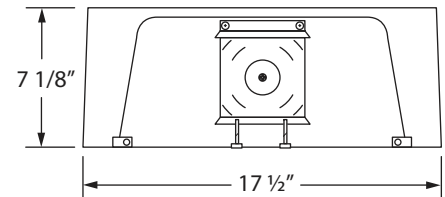
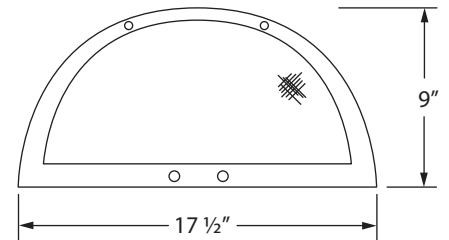
**LISTING & RATINGS:**

UL or CSA: Listed for wet locations.

**WARRANTY:**

Guaranteed for one year against mechanical defects in manufacturing.

\*\*\* SPECIFICATIONS SUBJECT TO CHANGE WITHOUT NOTICE\*\*\*

**DIMENSIONS DATA**

Max. Weight 22 lbs.



# TAMLITE LIGHTING



## SPECIFICATION & FEATURES

# CWSU

Contour UP/Down Light

### ORDERING INFORMATION (HID)

CATALOG#	DESCRIPTION	VOLTAGE	BALLAST
<b>HIGH PRESSURE SODIUM</b>			
CWSUHPA35L	35 WATT HPS	120	R-NPF
CWSUHPA50L	50 WATT HPS	120	R-NPF
CWSUHPA70L	70 WATT HPS	120	R-NPF
CWSUHPA100L	100 WATT HPS	120	R-NPF
CWSUHPA150L	150 WATT HPS	120	R-NPF
CWSUHQP70L	70 WATT HPS	120/208/240/277	HX-HPF
CWSUHQP100L	100 WATT HPS	120/208/240/277	HX-HPF
CWSUHQP150L	150 WATT HPS	120/208/240/277	HX-HPF
<b>PULSE START METAL HALIDE</b>			
CWSUMHQ50L	50 WATT MH	120/208/240/277	HX-HPF
CWSUMHQ70L	70 WATT MH	120/208/240/277	HX-HPF
CWSUMHQ100L	100 WATT MH	120/208/240/277	HX-HPF
CWSUMHQ150L	150 WATT MH	120/208/240/277	HX-HPF
Lamp(s) included			

**NOTES:**

\*\*\*CONSULT FACTORY FOR BALLAST INFORMATION\*\*\*

### ORDERING INFORMATION (FLUORESCENT)

CATALOG#	DESCRIPTION	VOLTAGE	BALLAST
CWSU2X26DL <sup>1</sup>	52 WATT PL	120-277	ELECTRONIC
CWSU2X32DL <sup>1</sup>	64 WATT PL	120-277	ELECTRONIC
CWSU2X42DL <sup>1</sup>	84 WATT PL	120-277	ELECTRONIC
<sup>1</sup> Battery back-up available by adding "B1" to end of part code for 120V or "B2" for 277V.			
Lamp(s) included			

**NOTES:**

Electronic fluorescent ballasts are high power factor, Class P insulation, 120-277V, and have a starting temperature of 0° F (-18° C).

Battery backup provides up to 90 minutes of power for two (2) lamps (depending on wattage), and has an operating temperature range of 32° to 122° F (0° to +50° C).

Lamp(s) included

\*\*\*CONSULT FACTORY FOR BALLAST INFORMATION\*\*\*

Application and Performance Specification Information is Subject to Change Without Notification