



# TAMLITE LIGHTING

660 NW Peacock Blvd. Port St. Lucie, FL 34986  
tel: (772) 878-4944 or on the web at [www.tamliteusa.com](http://www.tamliteusa.com)



## SPECIFICATION & FEATURES

Catalog Number
Notes
Job/Title

### APPLICATIONS:

The Side Mount Series (SMS) can be the illuminating solution for commercial, retail and residential applications. The fixture is perfect for shallow coves, showcases, displays and task lighting. These energy efficient, side mounted strips can be surface or pendant mounted, individually or in rows using various mounting methods.

### CONSTRUCTION:

The SMS housing is die formed of cold rolled steel body for exceptional strength and durability. Numerous KO's for ease of installation. Wiring components are mounted to one piece back housing, permitting removal of cover for maintenance without disturbing inner wiring. U.L. listed for direct mounting on low density ceilings.

### FINISH:

Housing is powder coat painted after fabrication. Three-stage iron phosphate pretreatment for maximum paint adhesion and rust inhibitors provide safe handling and corrosion protection. Parts are finished in a white high reflectance lighting grade baked enamel.

### ELECTRICAL:

\*\*\*CONSULT FACTORY FOR BALLAST INFORMATION\*\*\*

### WARRANTY:

Guaranteed one year from the purchase date of the product, against mechanical defects in manufacturing.

\*\*\* SPECIFICATIONS SUBJECT TO CHANGE WITHOUT NOTICE\*\*\*

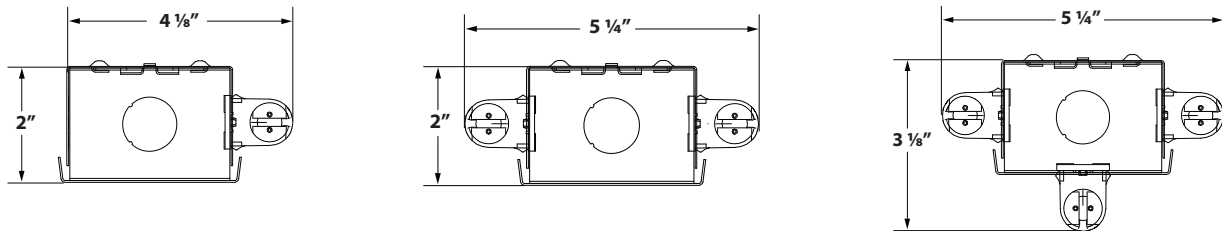
### ORDERING INFORMATION

## SMS

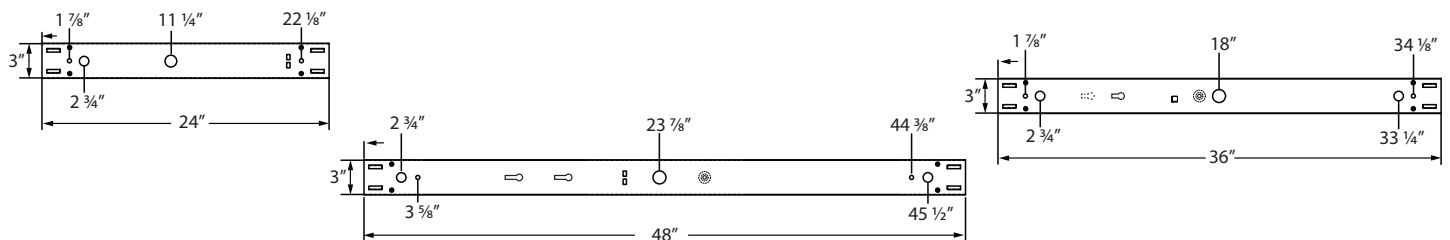
Sample Part Code: SMS2454D

<b>SERIES</b>	<b>LAMP QTY</b>	<b>LENGTH</b>	<b>LAMP WATTAGE</b>	<b>VOLTAGE</b>	<b>EMERGENCY BALLAST</b>
SMS: Side Mount Series	1: 1 Lamp 2: 2 Lamp 3: 3 Lamp	2: 2' 3: 3' 4: 4'	*14: 14W T5 17: 17W T8 32: 32W T8 *28: 28W T5 *54: 54W T5HO *2 lamp only	A: 120V D: 120-277V	BLANK: No options B1: 500 lumens 1 lamp B2: 1400 lumens 1 lamp B3: 1400 lumens 2 lamp** Factory Installed **T8 only

### LAMP CONFIGURATION



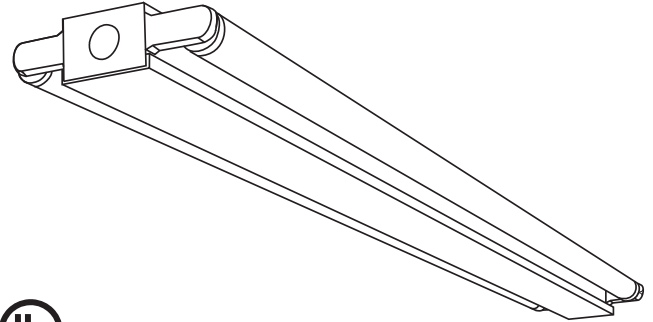
### MOUNTING INFORMATION



Application and Performance Specification Information is Subject to Change Without Notification

# SMS

## Side Mount Series



### SPECIFICATIONS

	4'	3'	2'
<b>LENGTH:</b>	48"	36"	24"
<b>WIDTH:</b>	3"	3"	3"
<b>DEPTH:</b>	2"	2"	2"