



**FLUORESCENT**

# TAMLITE LIGHTING

660 NW Peacock Blvd. Port St. Lucie, FL 34986  
tel: (772) 878-4944 or on the web at [www.tamliteusa.com](http://www.tamliteusa.com)

## SPECIFICATION & FEATURES

Catalog Number
Notes
Job/Title

### APPLICATIONS:

The Staggered Strip (SSL) Series is ideal where you require high levels of lumens such as retail lighting, industrial, and warehouse spaces. 3" offset provides even, shadow-free lighting in continuous row installations.

### CONSTRUCTION:

Formed from 23 gauge steel, allowing for exceptional strength and durability. The body is constructed with numerous KOs for ease of installation. Push in style lamp holders.

### FINISH:

White powder coat paint after fabrication. Five-stage iron phosphate pretreatment allows maximum paint adhesion and rust inhibitors provide corrosion protection. Parts are finished in a white high reflectance lighting grade baked enamel.

### ELECTRICAL:

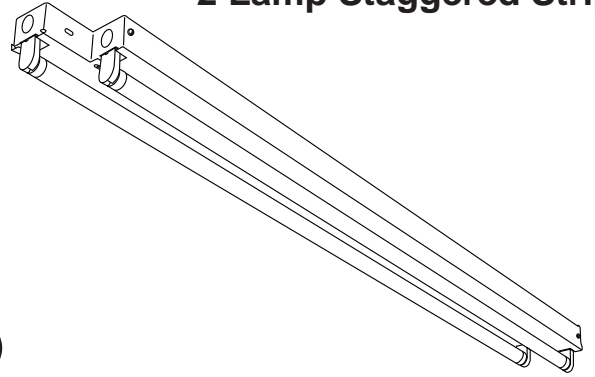
\*\*\*CONSULT FACTORY FOR BALLAST INFORMATION\*\*\*

### WARRANTY:

Guaranteed for one year from date of purchase against mechanical defects and defects in manufacturing.

# SSL

## 2 Lamp Staggered Strip



### SPECIFICATIONS

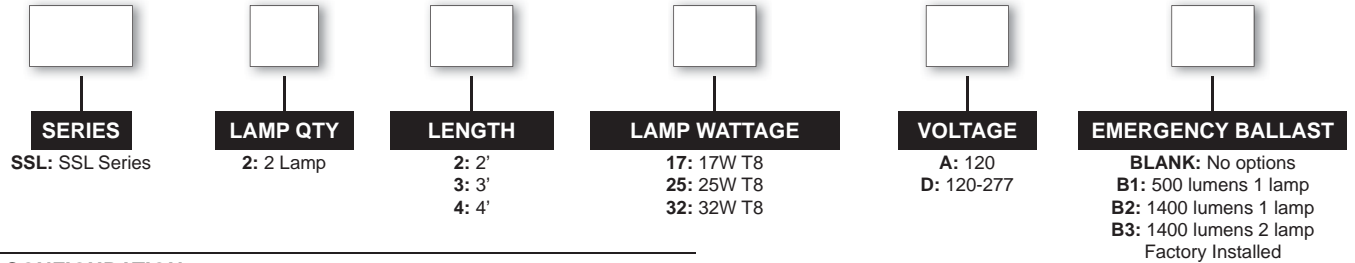
	4'	3'	2'
<b>LENGTH:</b>	48 1/8"	36 1/8"	24 1/8"
<b>WIDTH:</b>	4 1/2"	4 1/2"	4 1/2"
<b>DEPTH:</b>	2"	2"	2"

\*\*\* SPECIFICATIONS SUBJECT TO CHANGE WITHOUT NOTICE\*\*\*

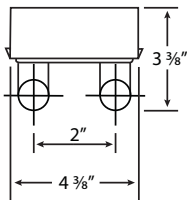
### ORDERING INFORMATION

## SSL

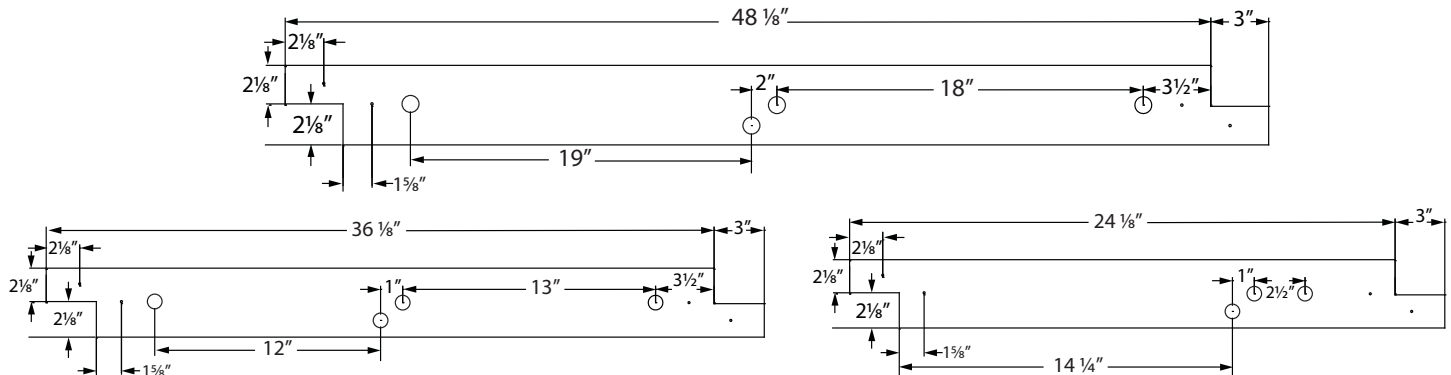
Sample Part Code: SSL2432D



### LAMP CONFIGURATION



### MOUNTING INFORMATION



Application and Performance Specification Information is Subject to Change Without Notification