



TAMLITE LIGHTING

660 NW Peacock Blvd. Port St. Lucie, FL 34986
tel: (772) 878-4944 or on the web at www.tamliteusa.com



SPECIFICATION & FEATURES

Catalog Number
Notes
Job/Title

APPLICATIONS:

The SUMT5W Series is ideal where you require high levels of lumens such as retail lighting, industrial, and warehouse spaces.

CONSTRUCTION:

Formed from 24 gauge steel, allowing for exceptional strength and durability. The body is constructed with numerous KOs for ease of installation. End plate quickly snaps into channels, push in style lamp holders.

FINISH:

White powder coat paint after fabrication. Three-stage iron phosphate pretreatment allows maximum paint adhesion and rust inhibitors provide corrosion protection. Painted parts are finished in high reflectance lighting grade baked enamel.

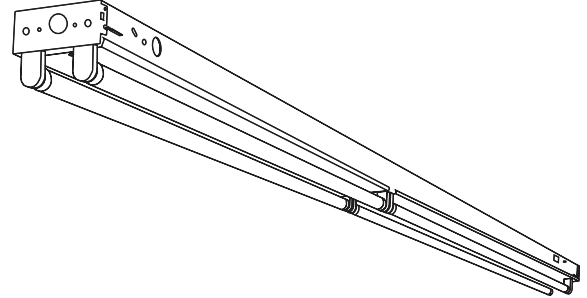
ELECTRICAL:

CONSULT FACTORY FOR BALLAST INFORMATION

WARRANTY:

Guaranteed one year from the purchase date of the product, against mechanical defects in manufacturing.

SUMT5W Series



SPECIFICATIONS

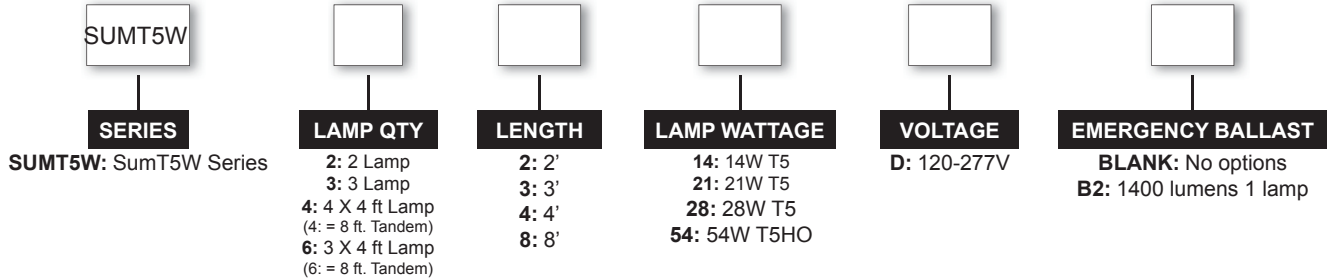
	8'	4'	3'	2'
LENGTH:	96"	48"	36"	24"
WIDTH:	4 1/2"	4 1/2"	4 1/2"	4 1/2"
DEPTH:	3"	3"	3"	3"

*** SPECIFICATIONS SUBJECT TO CHANGE WITHOUT NOTICE***

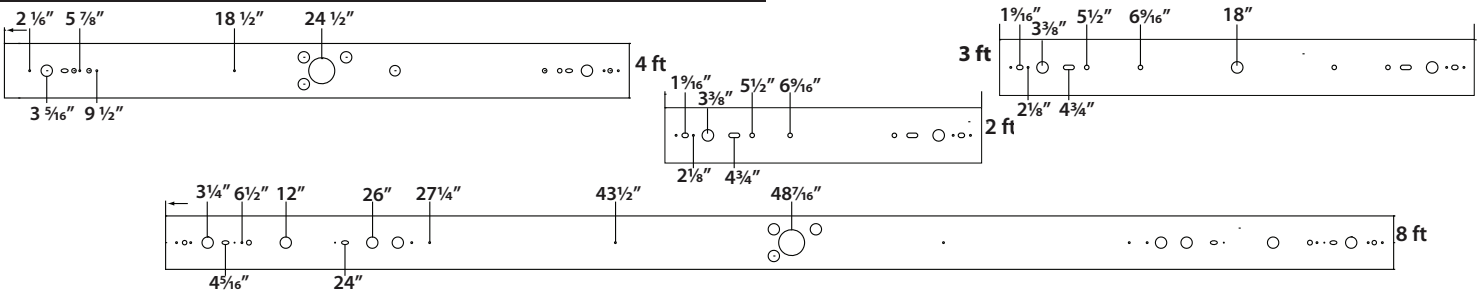
ORDERING INFORMATION

SUMT5W

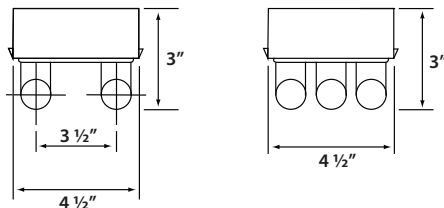
Sample Part Code: SUMT5W2454D



MOUNTING INFORMATION



LAMP CONFIGURATION



ACCESSORIES

	REFLECTORS			
	2'	3'	4'	(2x4') = 8'
Symmetric	ACSLWX2	ACSLWX3	ACSLWX4	ACSLWX8
Asymmetric	ACSLWZ2	ACSLWZ3	ACSLWZ4	ACSLWZ8
Industrial			ACSLW4	ACSLW8
Slotted			ACSLWY4	ACSLWY8
Specular	excluded when using 8ft lamps		ACSLWV4	ACSLWV8
	WIREGUARDS			
	2'	3'	4'	(2x4') = 8'
Strip			ACSLW4WG	ACSLW8WG
Industrial Reflector			ACSLW4WG	ACSLW8WG

Application and Performance Specification Information is Subject to Change Without Notification

FLU2010V5