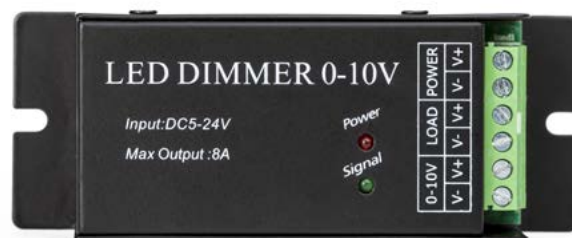


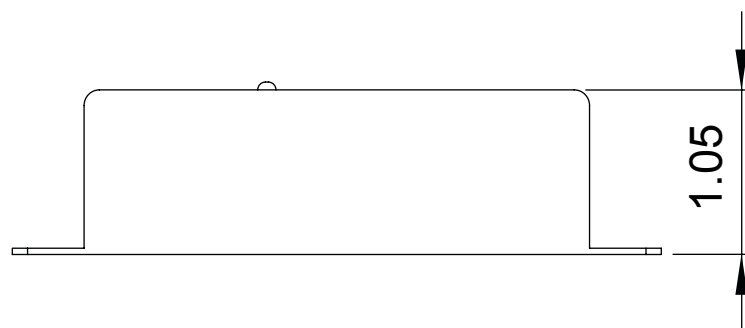
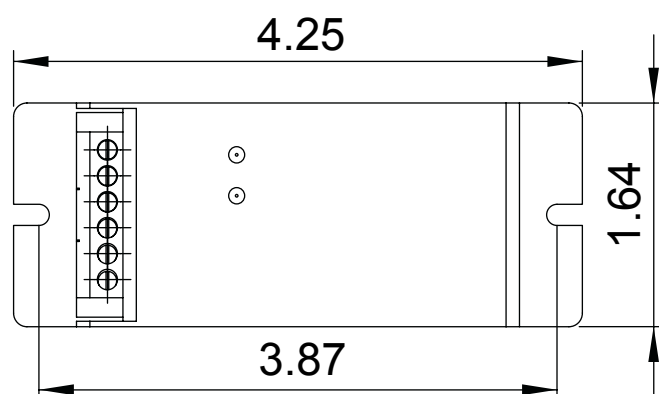
CONTRACTOR	
PROJECT	DATE
PREPARED BY	MODEL : TALRT-WD

SERIES SPECIFICATIONS

The TALRT-WD is an easy to use dimmer module that will allow you to add dimming capabilities to almost any constant voltage input LED module. The TALRT-WD Works with most sink and source 0-10v dimmers. Dimming down to .5% also compatable with constant current ICs that accept a pwm signals. With such a small footprint the ML-Dim10 can fit into small gang boxes or electrical cabinets.



LINE DRAWING



ELECTRICAL SPECIFICATIONS

Input Voltage
5~24VDC

Input Current
8A Max.

Operating Temp.
-20°C ~ +60°C

Output Voltage
5~24VDC

Output Current
8A Max.

Dimming Output
Pulse Width Modulation

Dimming Input
0-10V Sink

Output power
40W @ 5V
192W @ 24V

CERTIFICATIONS/WARRANTY

Location Rating:
Suitable for dry locations

Warranty

Guaranteed for one year from the purchase date of the product, against mechanical defects in manufacturing.



CONTRACTOR	
PROJECT	DATE
PREPARED BY	MODEL : TALRT-WD

ORDERING INFORMATION

Part Number: TALRT-WD

Carton Dimensions: 4.5x2x2 IN
11.43x5.08x.5.08CM

Product Weight: .15 Lbs.

TALRT-	WD
SERIES	Type
TALRT-	[WD]: WALL DIMMER

UPC BARCODES

	GTIN-12	GTIN-14	IMS Code
TALRT-WD	190010679263	00190010679263	0315-1440



NOTES

Consult factory for approved list of dimmers.

