

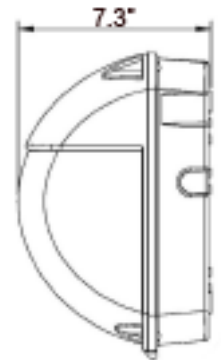
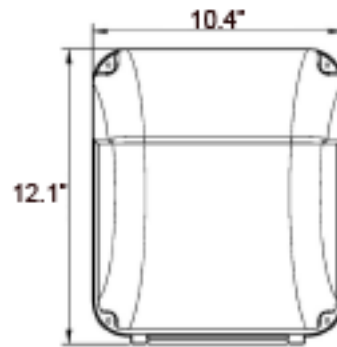
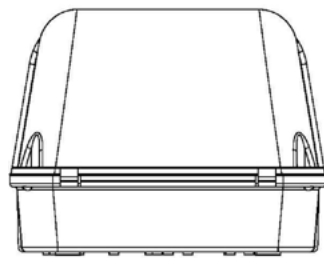
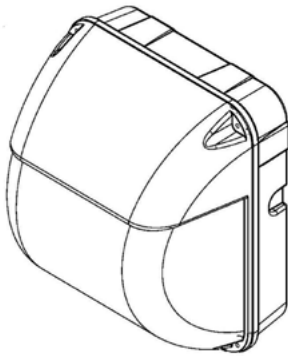
MODEL :		TYPE
PROJECT :		
PREPARED BY :	DATE :	

SERIES SPECIFICATIONS

The Vivid wall pack is an ideal substitute for traditional wall packs in many applications. The tough polycarbonate body is stylish as well as vandal resistant. It has the capability of being turned off and back on without a cool down period required for traditional HID wall packs.



LINE DRAWING



CONSTRUCTION

Housing

Die cast aluminum back housing with color matched polycarbonate front housing.

Finish

Powdercoat finish

Lens

Clear ribbed polycarbonate lens with pigmentation to reduce glare.

Coin Plugs

1/2" with O-rings for conduit or photocell
 3: left side, right side, back

ELECTRICAL SPECIFICATIONS

Input Voltage
 100-277VAC

Input Current
 0.6A Max

Input Power
 50W

Output Voltage
 40-66VDC

Output Current
 0.75A

Driver Efficiency
 85%

MODEL :		TYPE
PROJECT :		
PREPARED BY :	DATE :	

ELECTRICAL SPECIFICATIONS CONT.

Power Factor
≥ 0.9

Efficacy
96+ LM/W

Color Temp
5000K

Frequency
50-60Hz

CRI
> 80

Beam Angle
90°

LED Quantity
70 Pcs

LED Efficiency
140 LM/W

Lifespan
50000 Hrs.

Storage Temp
-40°C ~ +80°C

Storage Humidity
10-90% RH

Operating Temp
-20°C ~ +40°C

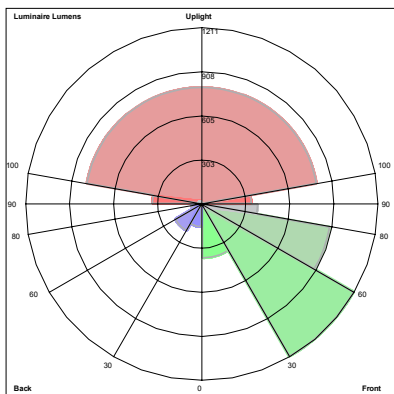
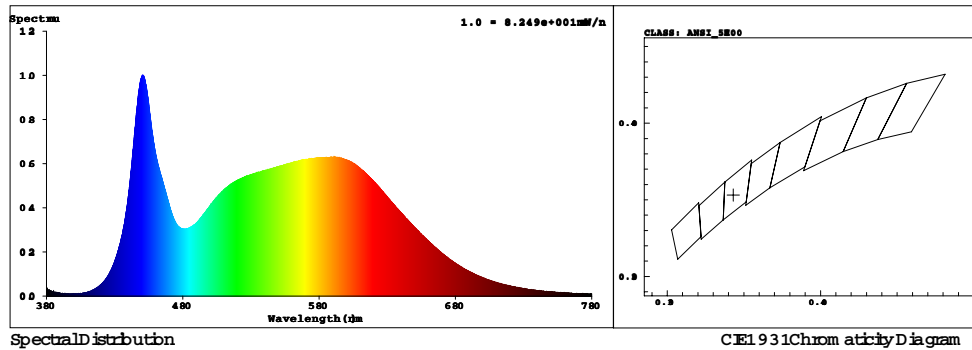
Withstand Voltage
I/P-FG: 2121VDC

Grounding Resistance
25A 100mΩ

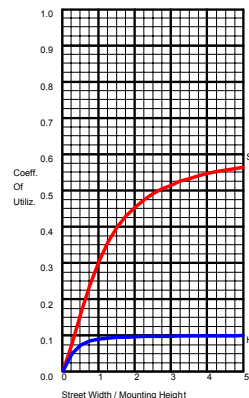
Lumens
4500+ LUMENS

PERFORMANCE SPECIFICATIONS

SPECTRAL POWER DISTRIBUTION & CHROMATICITY DIAGRAM



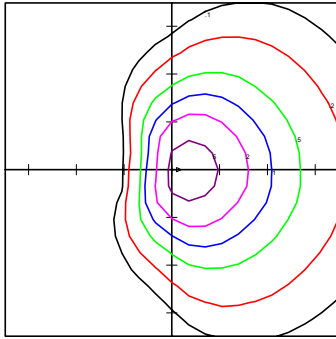
BUG REPORT
 TAMLITE LIGHTING HID
 VIVLED505K
 Luminaire Lumens:
 Front:
 Low=372.1, Medium=1210.9,
 High=897.8, Very High=387.0
 Back:
 Low=158.2, Medium=1210.9,
 High=76.1, Very High=26.1
 Uplight:
 Low=343.5, High=805.0
 BUG Rating : B1-U4-G3



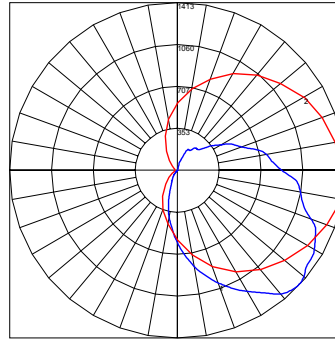
	LUMENS	PERCENT OF LAMP
DOWNWARD STREET SIDE	2867.9	63.9
DOWNWARD HOUSE SIDE	473.1	10.5
DOWNWARD TOTAL	3341.0	74.4
UPWARD STREET SIDE	1049.6	23.4
UPWARD HOUSE SIDE	98.9	2.2
UPWARD TOTAL	1148.5	25.6
TOTAL FLUX	4489.5	100.0

MODEL :		TYPE
PROJECT :		
PREPARED BY :	DATE :	

PHOTOMETRIC ISOLINES



TAMLITE LIGHTING HID
 VIVLED505K
 Horizontal Footcandles
 Scale: 1 Inch = 10 Ft.
 Light Loss Factor = 1.00
 Lumens Per Lamp = 4489.4
 Lumens = 4489.4
 Mounting Height = 10.00 Ft
 Maximum Calculated Value = 8.34 Fc
 Arrangement: Single



Polar Graph
 Maximum Candela = 1413.28
 Located at Horizontal Angle = 350
 Vertical Angle = 47
 Vertical Plane Through Horizontal
 Angles
 (350-170)
 Horizontal Cone Through Vertical
 Angle
 (47)

CERTIFICATIONS/WARRANTY

Listing
 UL Listed

Location Rating:
 Suitable for wet locations

IP Rating
 IP65 Rated

Warranty

Guaranteed for five years from the purchase date of the product, against mechanical defects in manufacturing.

ORDERING INFORMATION

Part Number: VIVLED505K

Carton Dimensions: 32.385x27.94x19.685CM
 12.75x11x7.75IN

Pallet Quantity: 40 PCS

Weight: 6.4 LBS

VIVLED	50	5K
SERIES	WATTAGE	COLOR TEMP
VIVLED	[50] : 50 Watts	[5K] : 5000K

UPC BARCODES

	GTIN-12	GTIN-14	IMS Code
VIVLED505K	190010653713	00190010653713	0309-0828



NOTES