



FLUORESCENT

TAMLITE LIGHTING

660 NW Peacock Blvd. Port St. Lucie, FL 34986
tel: (772) 878-4944 or on the web at www.tamliteusa.com

SPECIFICATION & FEATURES

Catalog Number
Notes
Job/Title

APPLICATIONS:

The Wrap Series (WL) is best for applications requiring a clean, decorative appearance. Provides high vertical illumination and brightness control.

CONSTRUCTION:

Formed from 23 gauge steel allowing for exceptional strength and durability. The body is constructed with numerous KOs for ease of installation, acrylic prismatic diffuser that is injection-molded.

FINISH:

Powder coat paint after fabrication. Three-stage iron phosphate pretreatment allows maximum paint adhesion and rust inhibitors provide corrosion protection. Parts are finished in a white high reflectance lighting grade baked enamel.

ELECTRICAL:

CONSULT FACTORY FOR BALLAST INFORMATION

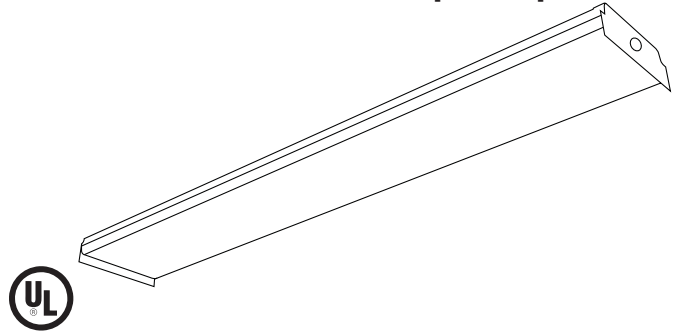
WARRANTY:

Guaranteed for one year from date of purchase against mechanical defects and defects in manufacturing.

*** SPECIFICATIONS SUBJECT TO CHANGE WITHOUT NOTICE***

WL

2 Lamp Wrap Series



SPECIFICATIONS

	2'	4'
LENGTH:	24 1/4"	48 1/4"
WIDTH:	7 3/4"	12 15/16"
DEPTH:	3 1/8"	3 1/8"

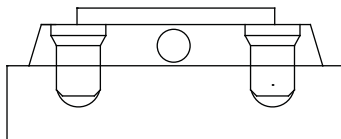
ORDERING INFORMATION

WL Series

Sample Part Code: WL2428A

SERIES	LAMP QTY	LENGTH	LAMP WATTAGE	VOLTAGE	EMERGENCY BALLAST
WL: Wrap Series	2: 2 Lamp	2: 2' 4: 4'	14: 14W T5 17: 17W T8 28: 28W T5 32: 32W T8 54: 54W T5HO	A: 120V B: 277V D: 120-277V	BLANK: No options B1: 500 lumens 1 lamp B2: 1400 lumens 1 lamp B3: 1400 lumens 2 lamp** Factory Installed **T8 only

LAMP CONFIGURATION



MOUNTING INFORMATION

