



FLUORESCENT

TAMLITE LIGHTING

660 NW Peacock Blvd. Port St. Lucie, FL 34986
tel: (772) 878-4944 or on the web at www.tamliteusa.com

SPECIFICATION & FEATURES

Catalog Number
Notes
Job/Title

WL

8' Wrap Series

APPLICATIONS:

The Wrap (WL) Series is best for applications requiring a clean, decorative appearance. Provides high vertical illumination and brightness control.

CONSTRUCTION:

Formed from 23 gauge steel allowing for exceptional strength and durability. The body is constructed with numerous KOs for ease of installation, acrylic prismatic diffuser that is injection-molded.

FINISH:

Powder coat paint after fabrication. Three-stage iron phosphate pretreatment allows maximum paint adhesion and rust inhibitors provide corrosion protection. Parts are finished in a white high reflectance lighting grade baked enamel.

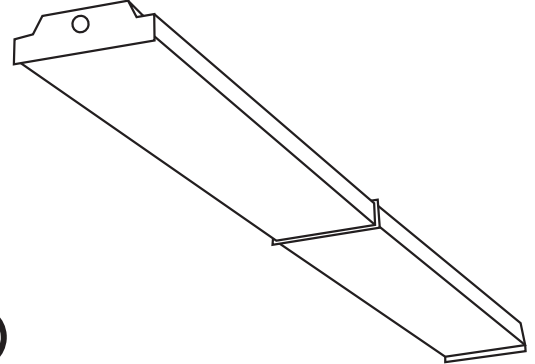
ELECTRICAL:

CONSULT FACTORY FOR BALLAST INFORMATION

WARRANTY:

Guaranteed one year from the purchase date of the product, against mechanical defects in manufacturing.

*** SPECIFICATIONS SUBJECT TO CHANGE WITHOUT NOTICE***



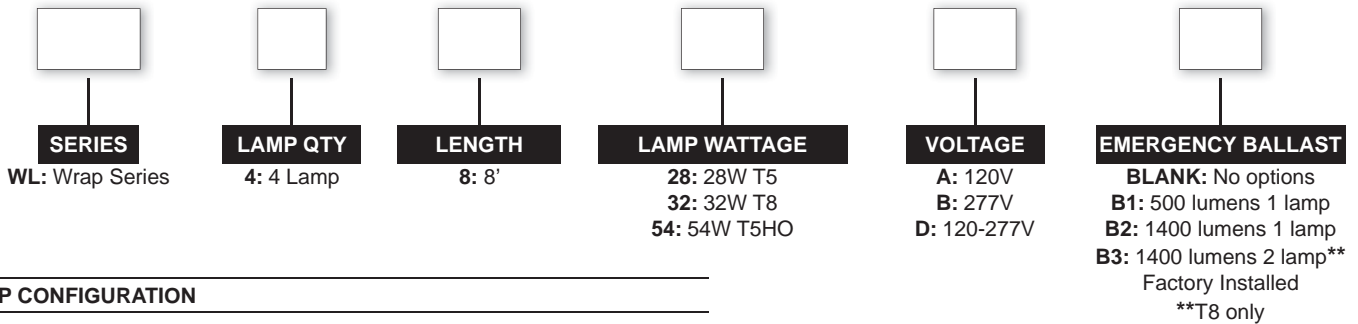
SPECIFICATIONS

LENGTH	96 1/4"
WIDTH	11 1/4"
DEPTH:	3 3/8"

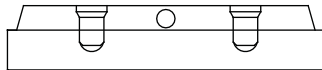
ORDERING INFORMATION

WL Series

Sample Part Code: WL4832A



LAMP CONFIGURATION



Tandem - 2 Lamp

MOUNTING INFORMATION

