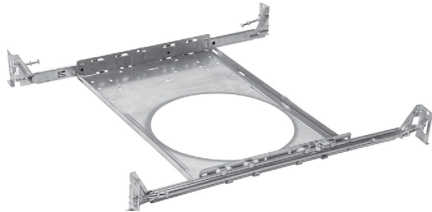




CONTRACTOR:	
PROJECT:	DATE:
PREPARED BY:	MODEL#: ROUGH-HB

SERIES SPECIFICATIONS



ROUGH Series

The 4" and 6" rough-in plates are ideal for easier layout planning and new construction pre-wiring. It is made of durable steel (0.19) and fits up to 24" spaced studs. The ROUGH-HB Series Rough-In-Plates come with hanger bars that include double headed nails and holding screws for easy installation

CONSTRUCTION

Material

Galvanized Steel

Material Thickness

0.19

Mounting

Hanger Bars

Fastening

Double headed nails and holding screws

ORDERING INFORMATION

EXAMPLE: ROUGH4-HB

SERIES	SIZE	MOUNTING
ROUGH	[4] : 4'	[-HB] : HANGER BARS
	[6] : 6'	