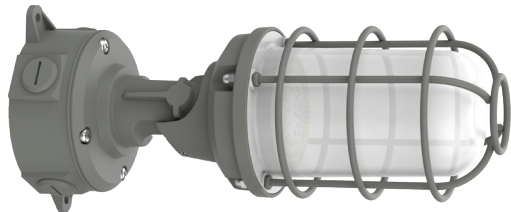




CONTRACTOR:	
PROJECT:	DATE:
PREPARED BY:	MODEL#:

DESCRIPTION



VPLWSCS SERIES

The VPL series vaporproof fixture is designed with utility in mind. A rugged surface mount vaporproof fixture combined with an aluminum housing and steel wire guard will ensure reliable service in demanding conditions. Intended for use in indoor and outdoor applications including utility areas, covered walkways, stockrooms and warehouses.



CONSTRUCTION/WARRANTY

Housing: Die cast aluminum

Finish: Gray powder coat

Optics: High transmission polycarbonate

Mounting: Surface mount with 3/4" coins plugs

Range of Adjustment: 90-180°

Operating Temperatures: -40°C to 45°C

Listings: UL listed to US and Canadian safety standards. Suitable for wet locations.

Warranty: 5-year limited warranty.

NOTE: Actual performance may differ as a result of end-user environment and application. All values are design or typical values, measured under laboratory conditions at 25 °C. Specifications subject to change without notice.

ELECTRICAL SPECIFICATIONS

Input Voltage: 120-277V AC

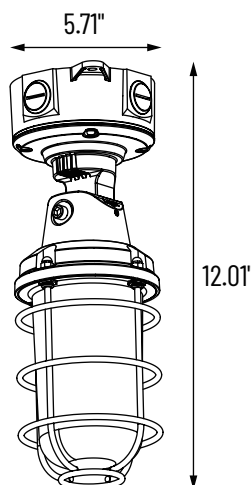
Frequency: 50-60Hz

Wattage: 15/20/30W

Max Amperage: 0.33A

Operating Temperatures:: -40°C to 45°C

LINE DRAWINGS



APPLICATION AND PERFORMANCE SPECIFICATION IS SUBJECT TO CHANGE WITHOUT NOTIFICATION



CONTRACTOR:	
PROJECT:	DATE:
PREPARED BY:	MODEL#:

ORDERING INFORMATION

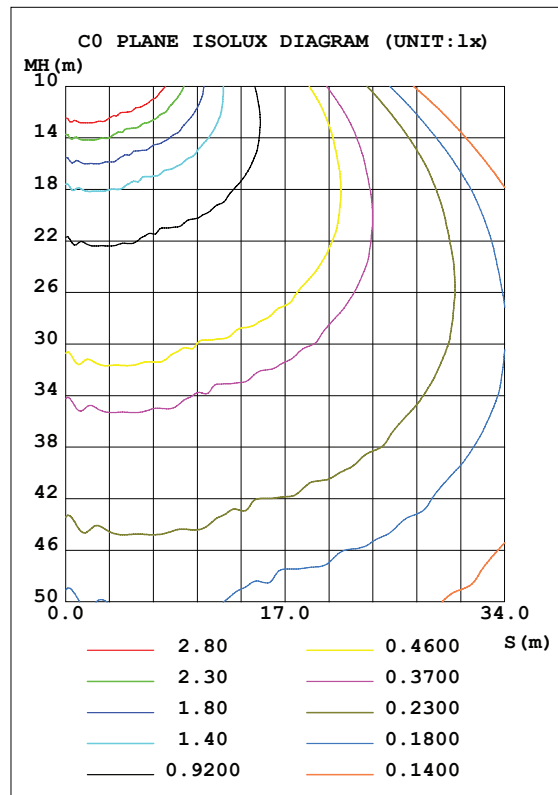
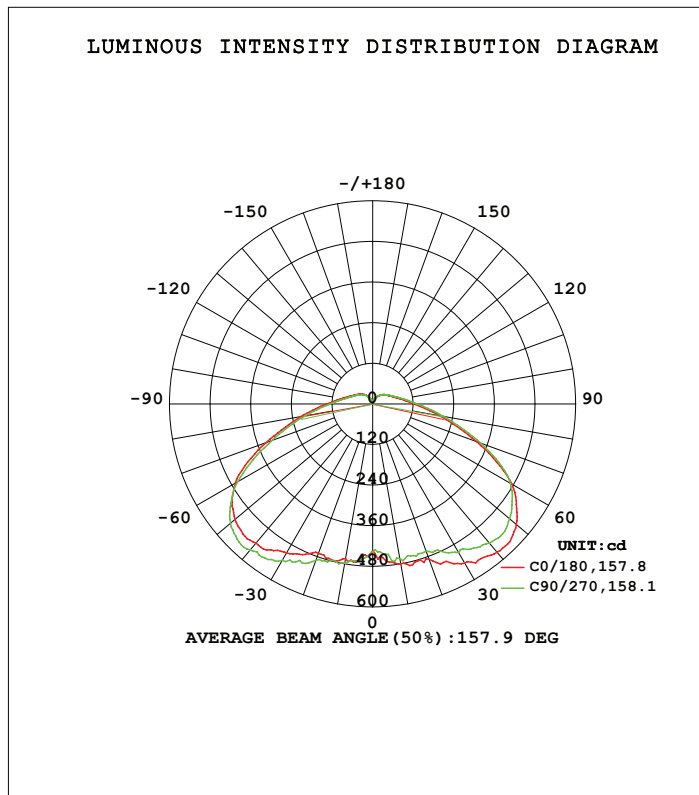
Example: VPLWSCS

SERIES	WATTAGE	COLOR TEMP.
VPL	[WS] : 15/20/30W	[CS] : 3K/4K/5K

LIGHTING SPECIFICATIONS

SERIES	LUMENS	LPW	WATTAGE	VOLTAGE	CRI
VPLWSCS	3300	110	30	100-277V	>80

PHOTOMETRICS



APPLICATION AND PERFORMANCE SPECIFICATION IS SUBJECT TO CHANGE WITHOUT NOTIFICATION